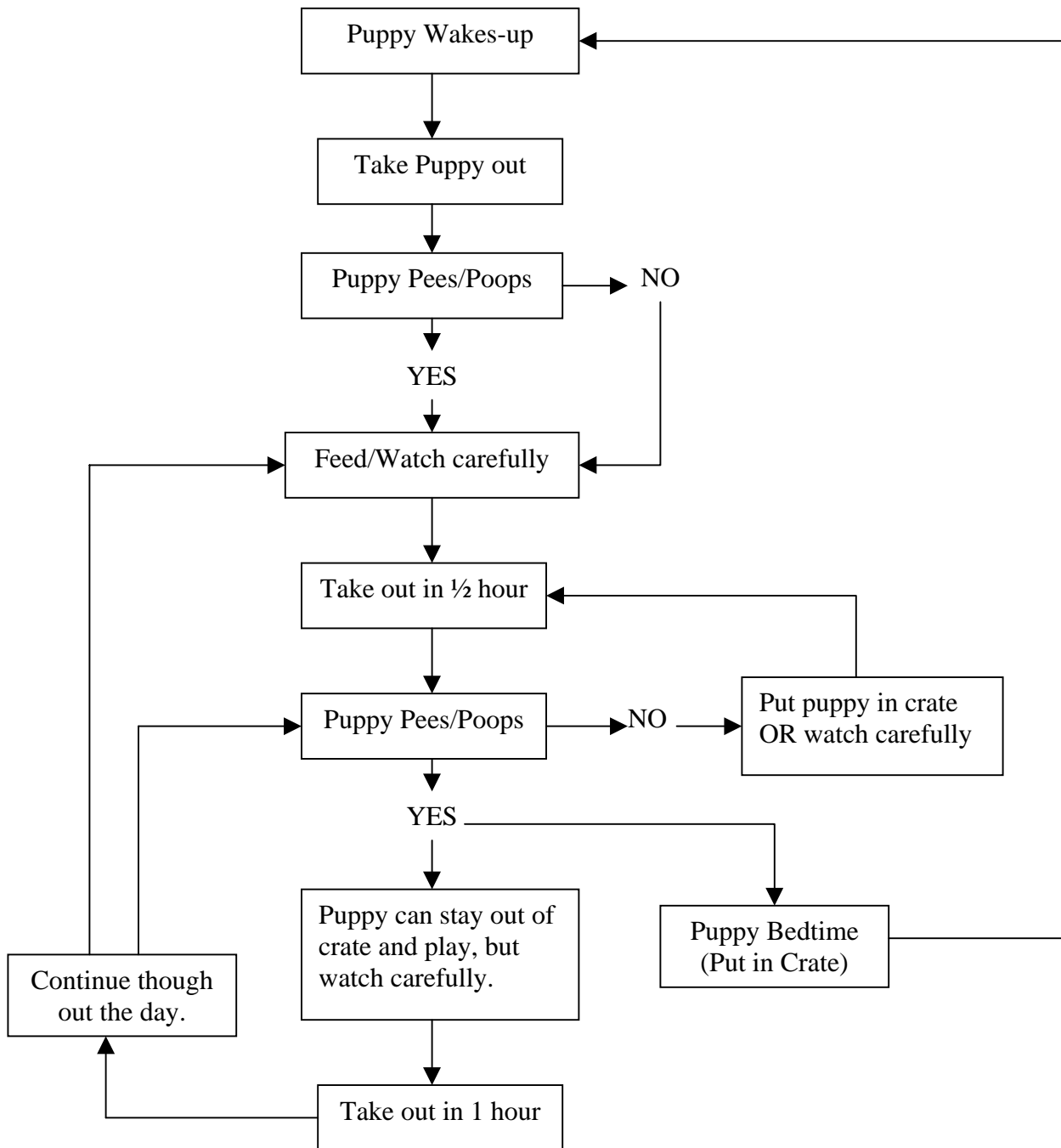


PUPPY HOUSEBREAKING FLOW CHART



- Go to the same door each time.
- Put on puppy's leash and ask in excited voice "Do you need to go out? Do you need to Potty??"
- Increase times if/when the puppy starts having longer periods of time he displays bladder/bowel control.
- Watch carefully for indication of impending accidents or beginning of accident. (Take him out immediately!)
- Watch for puppy going to the "Potty" door.
- GO OUT with puppy each time. Praise when he goes, and repeat the "Go potty" command while he is going.
- Leave food down for puppy for 15 minutes, then pick up (DO NOT LEAVE DOWN ALL THE TIME). This will help regulate the bowels.
- Water goes in, water comes out. Regulate puppy's water. Pick up 2 hours before bedtime.